

VISICALC Storage Commands

Load Command '/SL': Enter the file name or use the right arrow key to scroll through the Catalog on the Data Disk until the file desired shows up. Then push the RETURN key to start the load process.

Save Command '/SS': Enter the file name or use the right arrow key to scroll through the Catalog on the Data Disk until the file desired shows up. Then push the RETURN key to start the saving process.

Delete Command '/SD': Enter the file name or use the right arrow key to scroll through the Catalog on the Data Disk until the file desired shows up. Then push the RETURN key to start the load process.

Save Command '/SS': Enter the file name or use the right arrow key to scroll through the Catalog on the Data Disk until the file desired shows up. Then push the RETURN key to start the saving process. Note: If you save a file using the same name as any other file on the disk, you are replacing that previous file with the new one.

Delete Command '/SD': Enter the file name or use the right arrow key to scroll through the Catalog on the Data Disk until the file desired shows up. Then push the RETURN key to start the deletion process. You will have to answer the Prompt that appears to fullfill this command.

Initialize Command '/SI': Enter a disk that is UNUSED so that the disk can be formatted to accept Data. WARNING!! This process will cause complete loss of any Data on the particular Disk. This process should only be done on New Disks that haven't been used yet or for any Disk that you no longer care about.

Quit Command '/SQ': Insert the next Program Disk that you wish to use. Enter the Slot number (usually the same number that you have been using; EG: 6) and push the RETURN key to leave Visicalc and enter the program on the inserted Disk.

VISICALC Format Commands

Default Format Command `'/FD'`: Resets an individual entry position to the last Global Setting. If no Global setting in effect then the default is the General Format.

General Format Command `'/FG'`: Decimal or Scientific Notation is selected to display the largest number of significant digits. Labels begin at the leftmost space (left justified) and are cut off when the end of the column width ends. Values are moved as far right as possible (right justified) with a leading blank in the leftmost position in the column.

Integer Format Command `'/FI'`: Displays all values rounded to the nearest whole number (no decimal part).

Left Justification Format Command `'/FL'`: Affects only Values. The effect is to place the value to the left of the cell preceded by a blank space. This Format Command will turn off an explicit Integer format (`/FI`) setting for that entry position.

Right Justification Format Command `'/FR'`: Affects only Labels. The effect is to place the label up against the right edge of the cell. This Format Command will turn off an explicit Integer format (`/FI`) setting for that entry position.

Dollar and Cents Format Command `'/F$'`: The effect rounds all Values to two (2) decimal places. It also adds two (2) decimal places (.00) to integers and adds an extra 0 to values with just one decimal place. However, no \$ is placed in the entry position.

NOTE: The Format Command does not affect the actual value of a cell. It only affects the way the cell is displayed. EXAMPLE: Suppose cell A1 has a value of 10.098, but is shown with a `'/FI'` format making cell A1 appear as 10. Remember that any calculations using that cell will still use 10.098 as a value.

VISICALC Titles and Window Commands

The Titles Commands allows you to fix Rows or Columns in place so that as you scroll the window the Titles stay in view.

Horizontal Titles 'TH': Fixes all rows at and above the cursor.

Vertical Titles 'TV': Fixes all columns at and to the left of the cursor.

Both Titles 'TB': Combines the above operations at one time.

Negate Titles 'TN': Removes any fixation of Rows or Columns.

The Window Commands allow you to split your screen Horizontally or Vertically at the cursor position so that you can view your worksheet through two (2) Windows simultaneously.

Horizontal Window Command '/WH': Will place a second Column Heading just above the cursor.

Vertical Window Command '/WV': Will place a second Row Heading just to the left of the cursor.

The One Window Command '/W1': Provides a full display of the current Window that is activated.

The Synchronized Window Command '/WS': Causes a common scrolling effect across both activated windows.

The Unsynchronized Window Command '/WU': Turns off the common scrolling created by the '/WS' Window Command.

The ';' key will allow you to jump between Windows. When used, the cursor jumps to the last used cell in the opposite Window.

VISICALC Functions

- * SUM (list): Adds the values of all entry positions cited in the list.
- * MIN (list): Chooses the smallest value in the list.
- * MAX (list): Chooses the largest value in the list.
- * COUNT (list): Results in the number of non-blank entries in the list.
- * AVERAGE (list): Results in the arithmetical mean of the entries in the list.
- * ABS (value): Results in the absolute value of value.
- * INT (value): Results in the integer portion of value.
- * SQRT (value): Results in the square root of value.
- * EXP (value): Returns e (2.71828..) to the value power.
- * LOG10 (value): Results in the logarithum (Base 10) of value.
- * LN (value): Results the natural log (base e) of a number.
- * PI = 3.1415926536
- * SIN (value)
- * COS (value)
- * TAN (value)
- * ASIN (value)
- * ACOS (value)
- * ATAN (value)

The above group of Triginometric functions result in Radian value.

LOOKUP COMMAND

The LOOKUP Command in Visicalc is used to find a Value in a Table based upon some kind of Index Value. The syntax is as follows: 'Lookup(Value, Table). Here is an example: 'Lookup(A3,A10...A20). This example is illustrated below.

A3=3

	A	B
10	1	.01
11	2	.02
12	3	.03
13	4	.04
14	5	.05
15	6	.06
16	7	.07
17	8	.08
18	9	.09
19	10	.10
20	11	.11

What happens is this, when the Column Table from A10 to A20 is searched the Row Value that exceeds the 'Lookup Value' (in this case 3) is marked; and then the Row Cell preceding this marked cell (in this case A13) is used as the Index (in this case A12) to the Value to be returned. The Value returned is obtained by using the Row Cell immediatly to the right of the Index Cell (in this case B12, which is .03). A Lookup Table can also be created in Row fashion. When used in a Row fashion, the Column Cell immediatly before the exceeded value is used as the Index Value. Then the Row Cell immediatly below the Index Cell is used as the Returned Value.

FORECAST FOR 1984

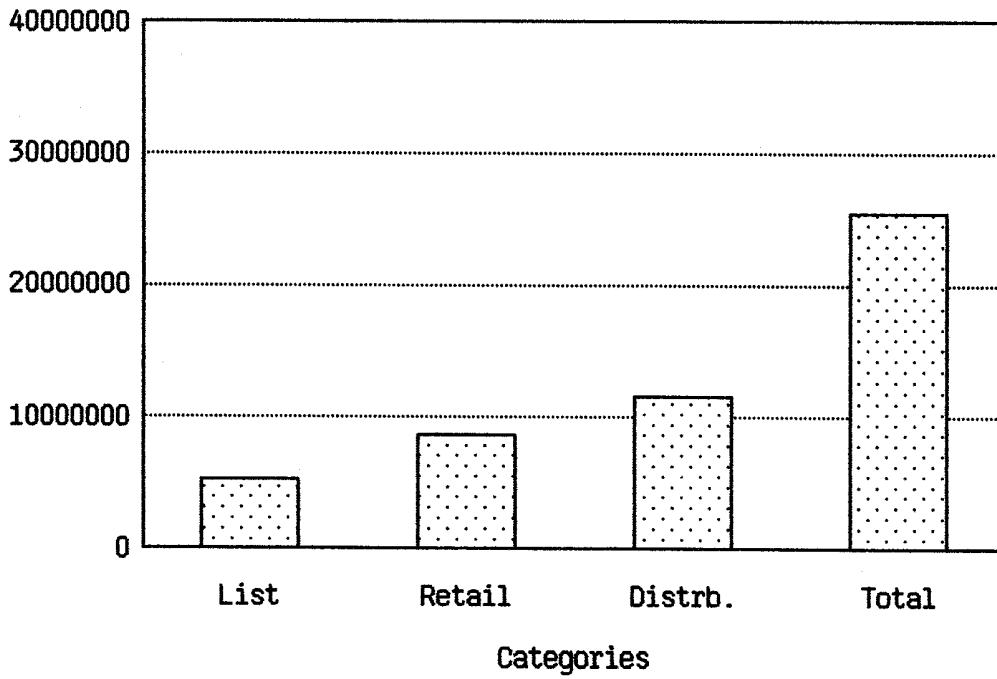
PRICES:	JAN	FEB	MAR	APR	MAY	JUN	JUL	AUG	SEP	OCT	NOV	DEC	AVG
LIST	100.00	110.00	121.00	133.10	146.41	161.05	177.16	194.88	214.37	235.81	259.39	285.33	178.21
RETAIL	80.00	85.60	91.59	98.00	104.86	112.20	120.05	128.45	137.44	147.06	157.35	168.36	119.25
DISTBR.	60.00	63.00	66.15	69.46	72.93	76.58	80.41	84.43	88.65	93.08	97.73	102.62	79.59
UNIT	50.00	51.00	52.02	53.06	54.12	55.20	56.30	57.43	58.58	59.75	60.95	62.17	55.88
AMT/SOLD:	JAN	FEB	MAR	APR	MAY	JUN	JUL	AUG	SEP	OCT	NOV	DEC	YTD
LIST	2000	2060	2122	2186	2252	2320	2390	2462	2536	2612	2690	2771	28401
RETAIL	5000	5150	5305	5464	5628	5797	5971	6150	6335	6525	6721	6923	70969
DISTBR.	10000	10300	10609	10927	11255	11593	11941	12299	12668	13048	13439	13842	141921
TOTAL	17000	17510	18036	18577	19135	19710	20302	20911	21539	22185	22850	23536	241291
INCOME:	JAN	FEB	MAR	APR	MAY	JUN	JUL	AUG	SEP	OCT	NOV	DEC	YTD
LIST	200000	226600	256762	290957	329715	373636	423412	479795	543642	615936	697759	790649	5228863
RETAIL	400000	440840	485885	535472	590152	650423	716819	789968	870682	959567	1057549	1165556	8662913
DISTBR.	600000	648900	701785	758989	820827	887792	960176	1038405	1123018	1214508	1313393	1420466	11488260
TOTAL	1200000	1316340	1444432	1585418	1740695	1911851	2100407	2308167	2537343	2790010	3068702	3376672	25380036
PROFITS:	JAN	FEB	MAR	APR	MAY	JUN	JUL	AUG	SEP	OCT	NOV	DEC	YTD
LIST	100000	121540	146376	174967	207837	245572	288855	338402	395083	459869	533804	618376	3630682
RETAIL	150000	178190	209919	245552	285565	330429	380651	436773	499578	569698	647904	735153	4669413
DISTBR.	100000	123600	149905	179203	211707	247858	287898	332073	380927	434890	494286	559909	3502255
TOTAL	350000	423330	506200	599722	705108	823859	957404	1107248	1275588	1464456	1675994	1913439	11802349

Forecast for 1984

Year End Gross Sales

Actual Dollar Amounts

Legend

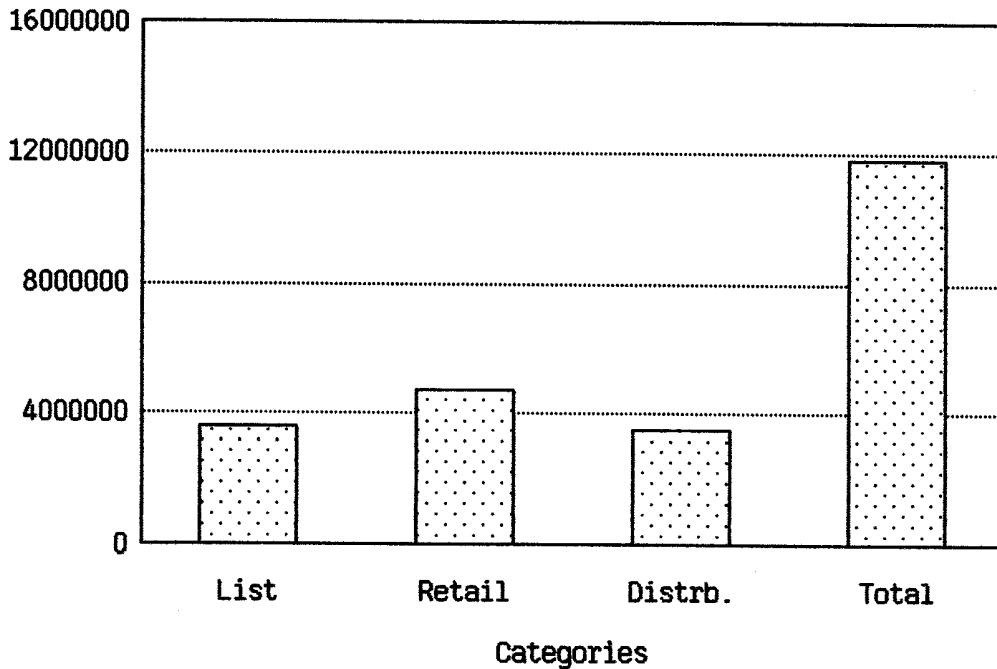


Forecast for 1984

Year End Profits

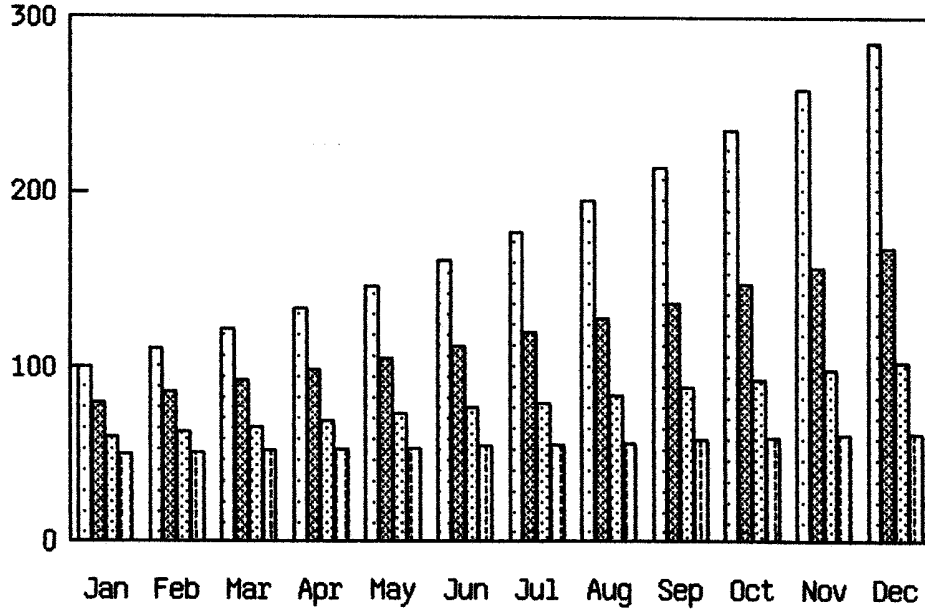
Actual Dollar Amounts

Legend



Forecast for 1984 Sales Report

Dollar Amounts

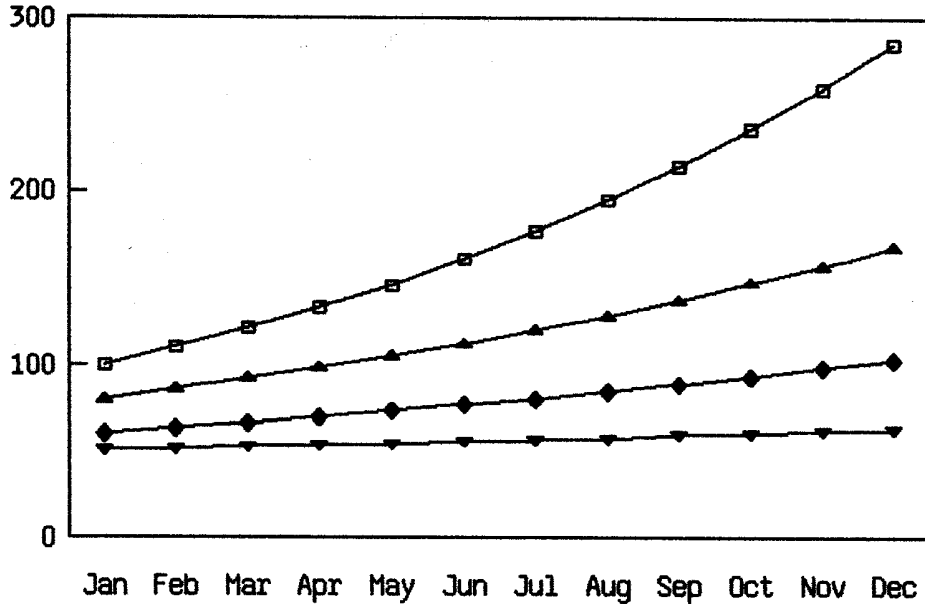


- List
- Retail
- Distbr.
- Unit
- Unit

Months
Price Data

Forecast for 1984 Sales Report

Dollar Amounts

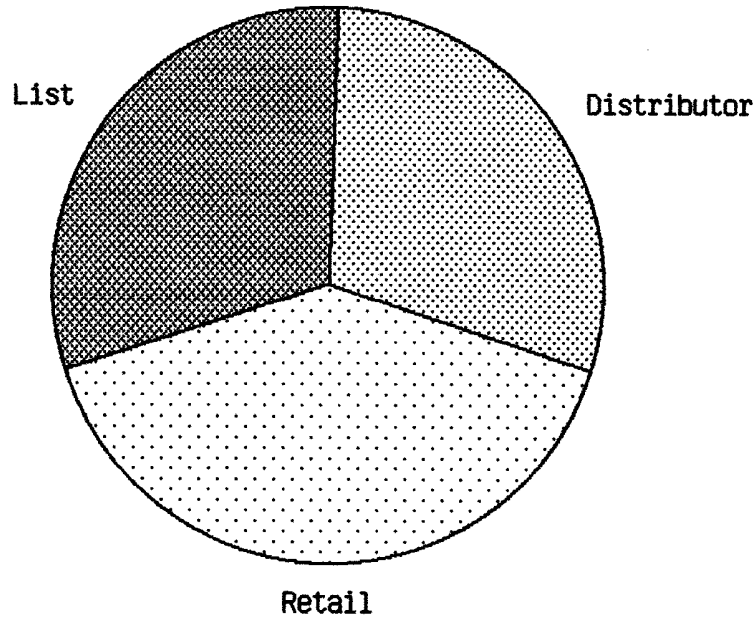


- List
- Retail
- Distbr.
- Unit

Months
Price Data

Forecast For 1984

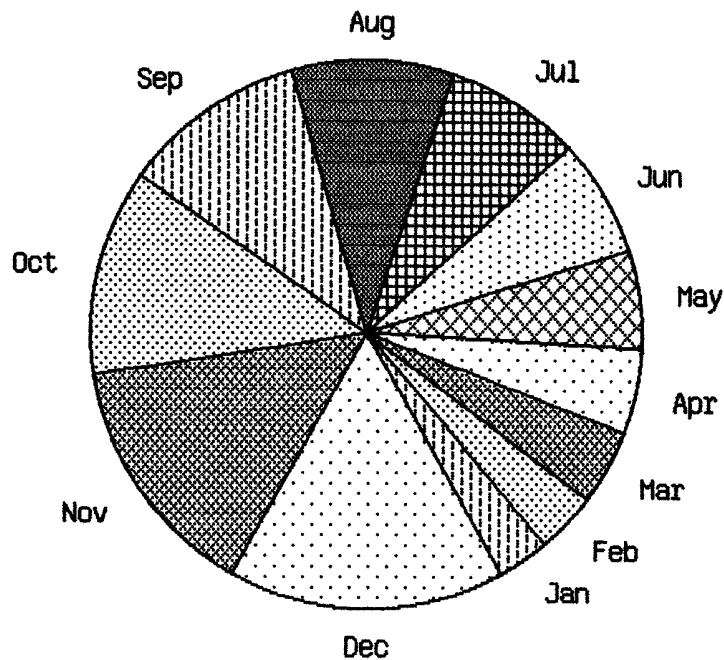
Year End Totals



* Using Current Factors & Amounts

Forecast For 1984

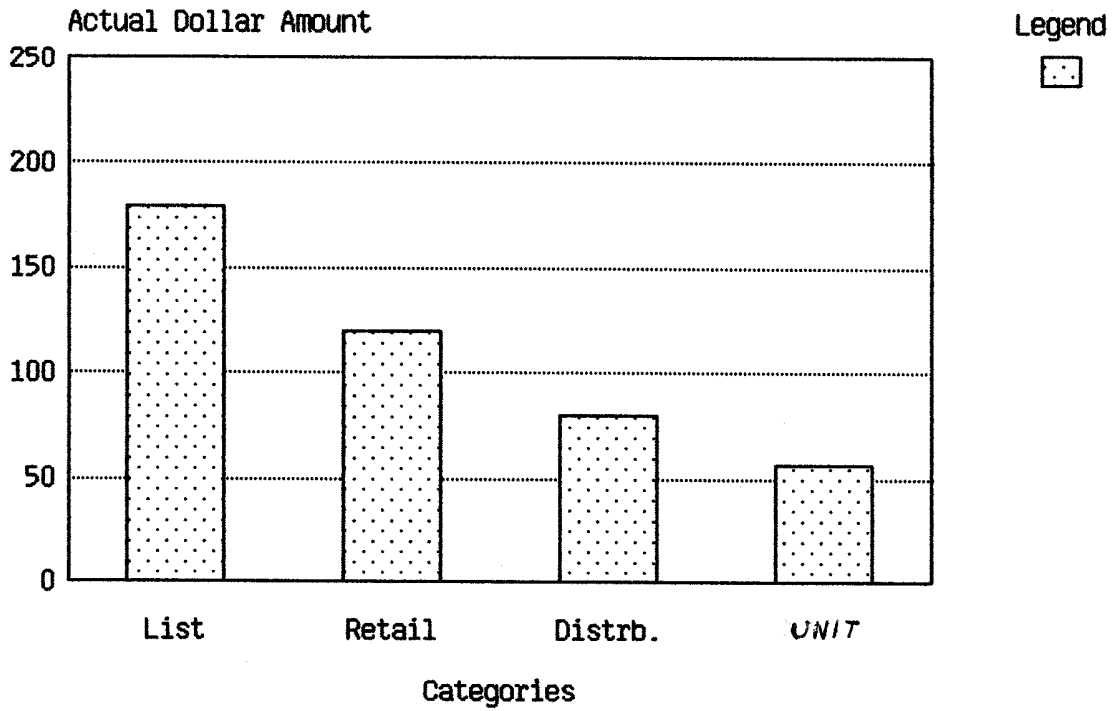
Monthly Totals



* Using Current Factors & Amounts

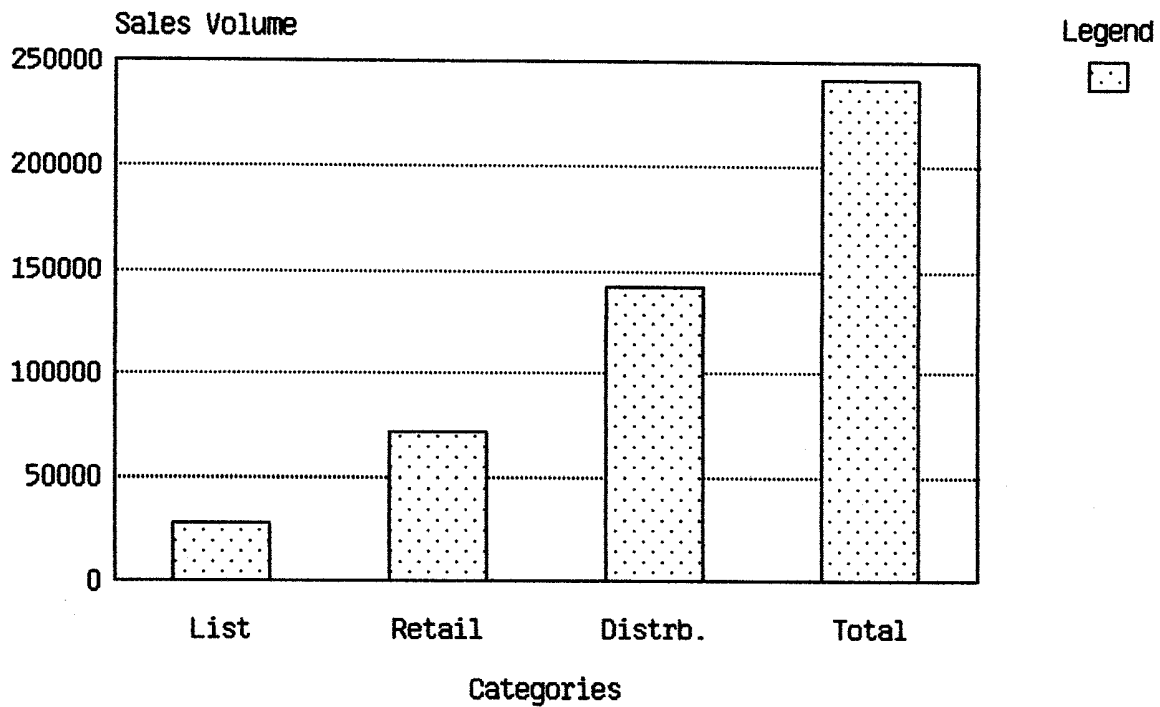
Forecast for 1984

Year End Average Prices



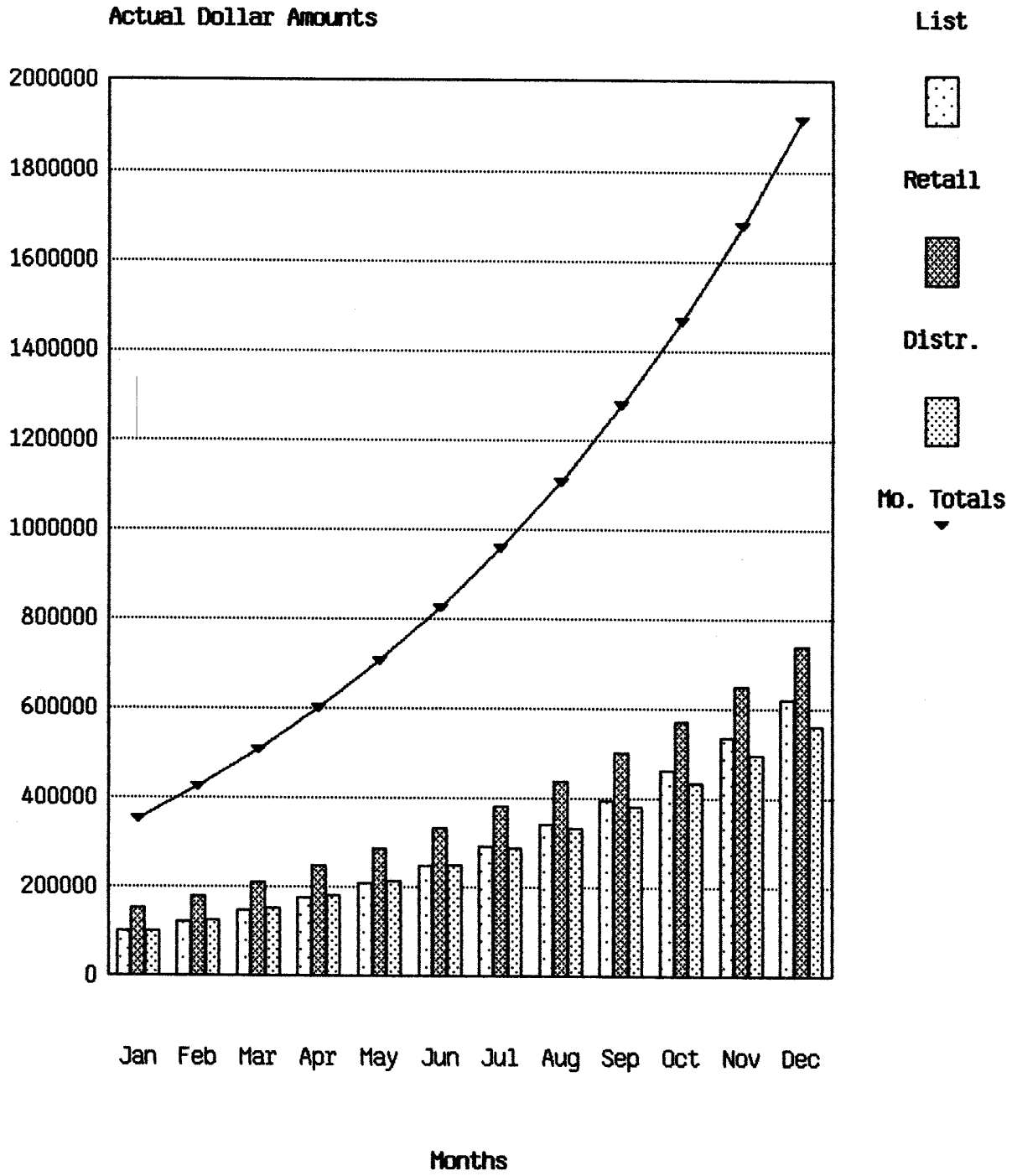
Forecast for 1984

Year End Total Sales



Forecast For 1984

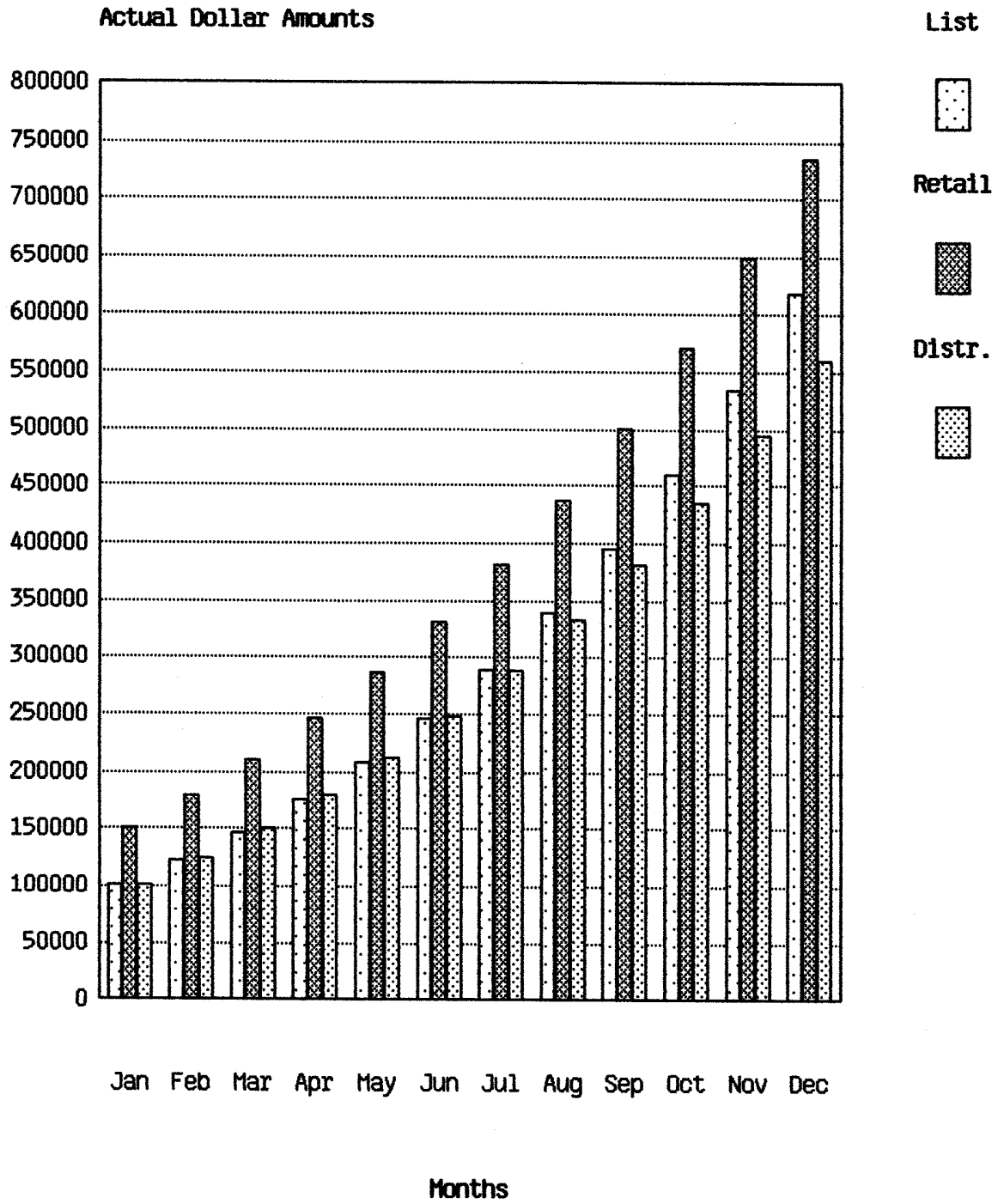
Profits at Distribution Levels



* Using Current Factors & Amounts

Forecast For 1984

Profits at Distribution Levels



* Using Current Factors & Amounts